



Ansil FIRE School

World-Class Training
- Since 1940

General INFORMATION



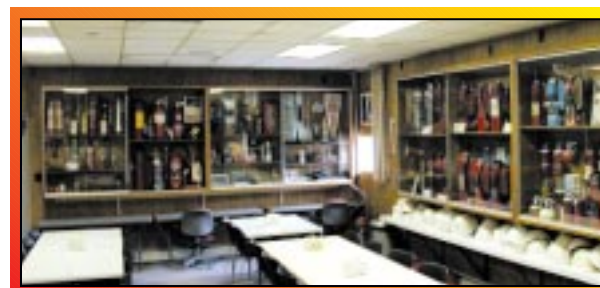
First-Aid Fire Protection

Big fires start small. Therefore, it is vital that proper firefighting procedures be employed during the incipient stages of a fire. In this critical moment, the difference between a novice and trained firefighter can mean the difference between a minor incident and major catastrophe.

Effective first-aid fire protection depends on two basic factors: **the availability of the right equipment and the availability of people who are trained to use that equipment.** That's why, in 1940, the first training fire was ignited – *and extinguished* – at the Ansul Fire School. We learned early on that even the best fire extinguishers in the world need trained operators. And apparently, so did a lot of other people. Every year, the Ansul Fire School trains students from major oil companies, utilities, mining operations, and industrial facilities around the world. These are people who frequently fight fires and understand the importance of practical, hands-on training.

Facilities

The Ansul Fire School is located within Ansul's 27-acre Fire Technology Center. The training grounds feature a multitude of live fire props – overhead flanges, propane jets, tank trucks, paint lockers, barrel racks, and numerous flammable liquid spills and pits. At this one location, it is possible to create virtually any type of fire and configuration. And our tiered, 36-seat classroom is equipped with the latest in audio/visual equipment and training aids.

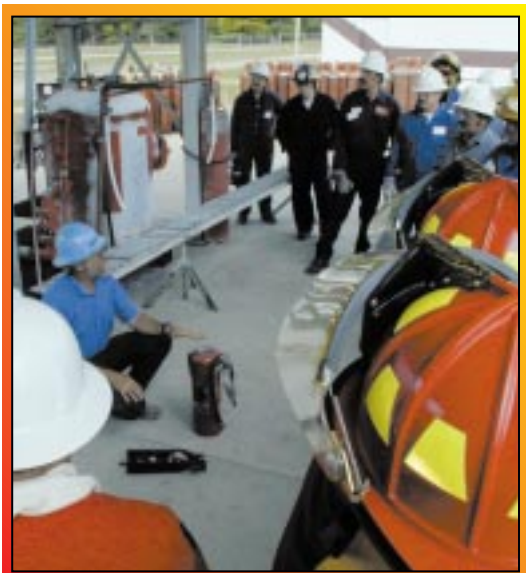




2. Extinguisher Operation

In an actual fire situation, there's no time to fumble with equipment. Every second counts! You can't expect to extinguish a fire unless you know how to actuate and control your equipment: how to properly carry a hand portable unit or how to brace yourself against the "kick" of a dry chemical discharge nozzle.

Ansul Fire School students have the opportunity to make mistakes – **under controlled conditions** – with instructors at their side. Classroom work, combined with repetitive hands-on training, helps eliminate these mistakes and improve reaction time during the early stages of fire.



3. Application Techniques

There's a knack to handling a fire extinguisher - **a right way and a wrong way to apply fire extinguishing agent.** That's why our students spend most of their time on the training field using real extinguishers on real fires.

That's where they learn how to approach a fire properly... take advantage of prevailing winds... cope with the fierce heat... direct extinguishing agent streams... and back away safely when the fire is out.

They learn through practice. And practice is what eventually turns them into accomplished firefighters.



4. The Importance of Maintenance

Even the finest equipment may not operate if not properly recharged and maintained. Although many students may not be responsible for extinguisher recharge or maintenance, it's still extremely important that they understand the consequences of improperly serviced extinguishers.

Ansul Fire School students recharge the equipment they use. They are also instructed to inspect the equipment - and to recognize and report any abnormal condition that might hinder extinguisher performance.

Fire HAZARDS



Flammable liquid in-depth fires

occur in dip tanks, drip pans, dikes around storage tanks, flow coaters, solvent cleaning tanks, drainboards, quench tanks, etc.



Flammable liquid spill fires

are found around or under vehicles, compressors, turbines, metalworking machines, storage drums, transformers, filling stations, bulk storage areas, batch processing areas, warehouses, paint mixing areas, etc.

"I never dreamed that a hand portable could put out that much fire."

"I learned things here I could never have learned on the job where the possibility of fire is very real."

"The school gave me a new respect for equipment use and proper recharge."



Multi-level flammable liquid fires

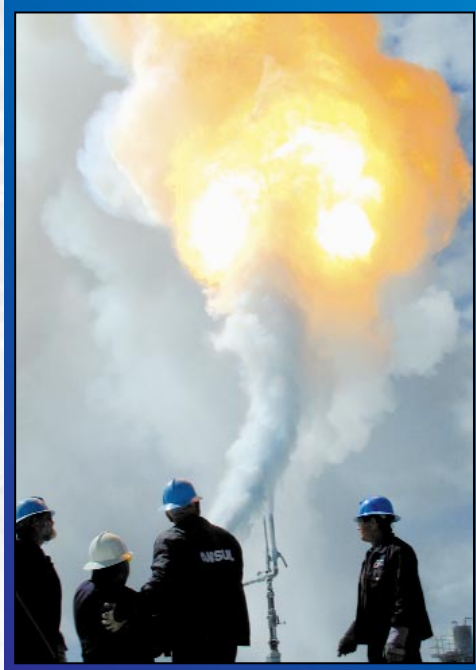
are often associated with paint lockers, ruptured barrels or tanks, overflows in filling operations, broken valves and pipe, and many others.

"Very good instruction and hands on ... not rushed through like some of the other schools I've attended."

"Excellent teaching skills... good practical experience ... well developed school."

"Very thorough and confident instructors."

"I thought I knew how to use fire extinguishers. I was wrong. I will now be able to use these skills to instruct the employees at my plant site."



Flammable gas pressure fires

often occur under abnormal circumstances such as safety relief operation, weld joint failure, pipe rupture, compressor seal or packing failure, and appliance gas line rupture.



Flammable liquid pressure fires

are commonly caused by equipment failure: seals, packing, or gaskets on pumps; pipe flanges; valve stem packing; etc.



Class A fires

involve ordinary combustibles like tires, trash, dust, paint filters, cardboard boxes, wooden pallets, and laundry.

"We feel it is the best training in North America."

"In the 23 years of employment with my company, this has been the best training program I have attended."

"I came halfway around the world and I felt the course was worth the time and money."

"This program far exceeded my expectations coming in. I will recommend this course for 100% of my department."

Learning OBJECTIVES

Although a short training program won't turn a novice into an expert, Ansul Fire School trainees show a substantial improvement in a very short period of time. Economically speaking, there is a large return on your initial training investment. After this quick burst of improvement, returns on added training investments decline rapidly.

Ansul focuses on the early portion of the learning curve by emphasizing those basic principles that will dramatically improve firefighting performance. The intent is to upgrade the performance of a novice in a reasonable period of time - and at a reasonable cost.



1. Equipment Capabilities and Limitations

When faced with a fire situation, every individual must make a split-second decision... *"Do I attempt extinguishment or seek safety?"* This decision can be based on nervous emotion or a rational assessment of the situation. Therefore, the first objective is to provide enough information and experience for the student to evaluate the probability of success or failure. This can only be accomplished with a good dose of both classroom and hands-on instruction.

In the classroom, students learn about fire characteristics as well as the capabilities of extinguishing agents and equipment. Then, they move to the field where they are placed in actual fire situations to experience the excitement of attacking a fire; the thrill of extinguishing it; or perhaps, the frustration of failure. Only with this first-hand experience can truly clear-headed decisions be made in a fire emergency.



Curriculum

Our basic three-day program includes a mixture of classroom and field instruction - **with heavy emphasis on live hands-on fire training**. Each student fights about 30 fires using a variety of cartridge-operated and stored pressure extinguishers, wheeled extinguishers, and hoseline apparatus. The students also get a feel for most types of extinguishing agents: dry chemicals, metal agents, carbon dioxide, and foam.

In the classroom, our experienced instructors cover topics like fire extinguishment fundamentals, agents, hardware, ratings and specs, detection/suppression systems, and service. Every graduate takes home the Ansul Fire Training Manual, which summarizes all that was learned during the week and serves as a valuable reference tool all year long.

Two of our most effective training techniques...

🔥 In the *"Instant Replay"* segments, students are videotaped as they fight various fires. Then, back in the classroom, the tapes are played back and discussed to illustrate common errors and pinpoint the most successful techniques.

🔥 During the *"You Make The Call"* segment, students are asked to draw on their own experiences and new-found skills to decide which techniques to employ in the midst of various live fire situations.



Training Options

The Ansul Fire School offers three basic training options:

- 🔥 **Standard first-aid fire extinguishment program** – *three days – individual enrollment and tuition.*
- 🔥 **Custom schools** – *one company purchases entire school – program is built around your specific company needs.*
- 🔥 **On-site training** – *our staff takes the Ansul Fire School on the road to your company or alternate location.*



**For
MORE
Information**

Recreation

The Ansul Fire School is headquartered in the city of Marinette, Wisconsin, a scenic community bordering Green Bay and Michigan's Upper Peninsula. As a summer resort area, people attending the fire school often plan a vacation around their stay in the north woods. Comfortable, modern accommodations are available along with excellent restaurants, entertainment, and recreational opportunities.

Call, Fax, Write, or Visit Our Web Site:

Ansul Fire School
One Stanton Street
Marinette, WI 54143-2542

Phone: 800-323-8491 or 715-735-7411

Fax: 715-732-3819

www.ansul.com

